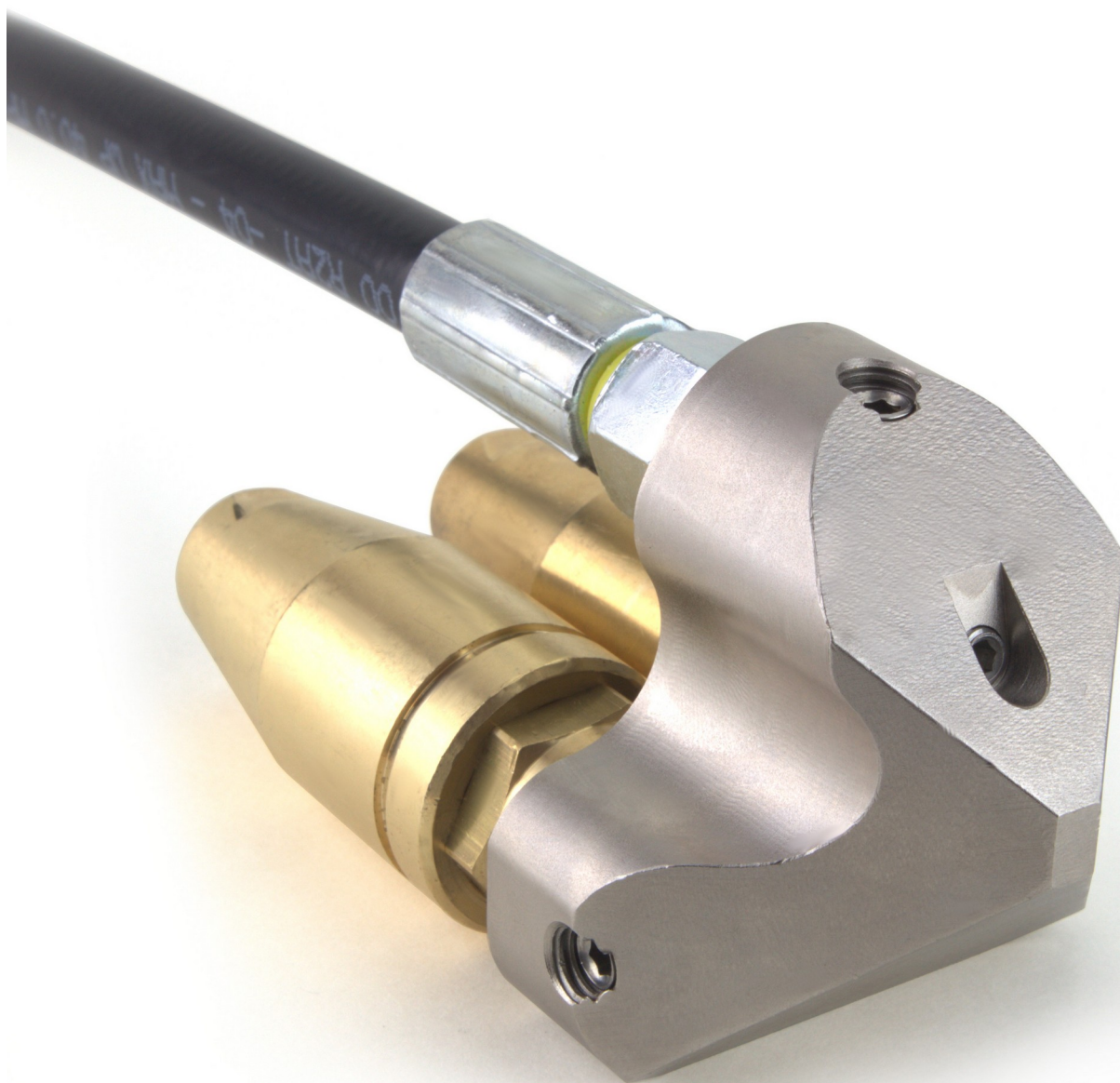


# ARROWS NOZZLES

## HIGH PERFORMANCE ARROW NOZZLES



**ARROWS: HIGH PERFORMANCE ARROW NOZZLES**



**Technical features:**

The support device allows the Rotating Nozzle to advance inside the pipe, giving it stability and increasing its washing performance, managing to remove deposited encrustations of tar and cement. The construction material of the Freccia is high quality steel and is supplied with 1/4" M reduced nipples in stainless steel and nozzles equipped with a ceramic rotating jet

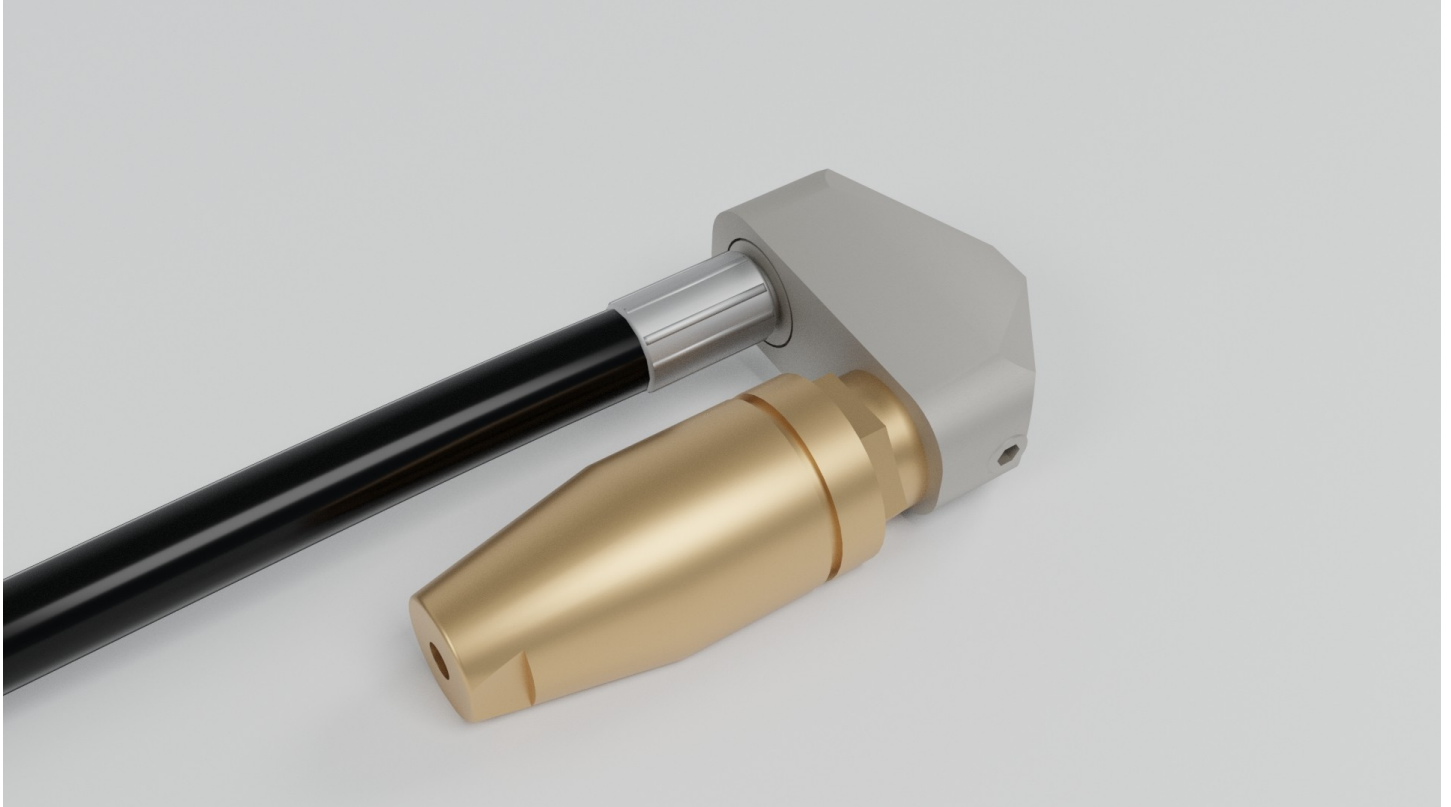
**Applications:**

- Descaling of tar, concrete and cement
- Roots and ice cut
- Ducts blocked by rocks, stones
- Removal of sludge deposits
- Cleaning pipes from sedimented soap and grease

**Maximum pressure 250 bar**

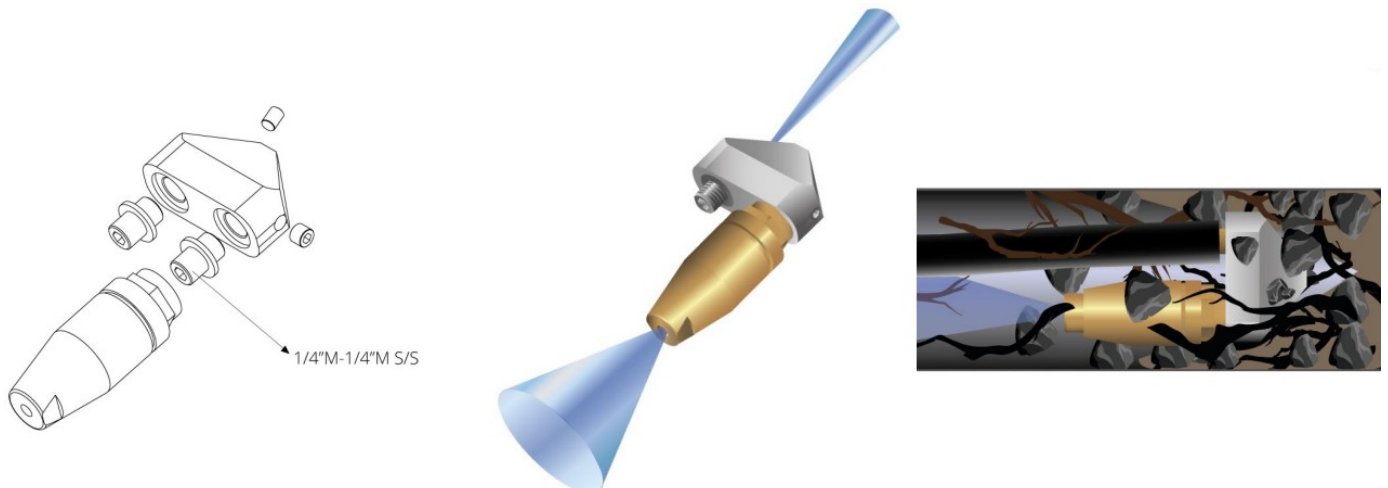


# Arrow 1



Cod.	Description	Connection	Rotating Nozzle	Front jet (Insert)	Lateral jet (Insert)	Arrow Ø x L x H (mm)	Weight (Kg)	Tube size (mm)
30100.01	Freccia 1	1/4" F	1 x 1/4"	1 x M6x8	-	64x40x25	0,30	80 - 150

Arrow supplied with 2 reduces stainless steel nipples and 1 rotating nozzle.  
Available with perforated or blind front jet.

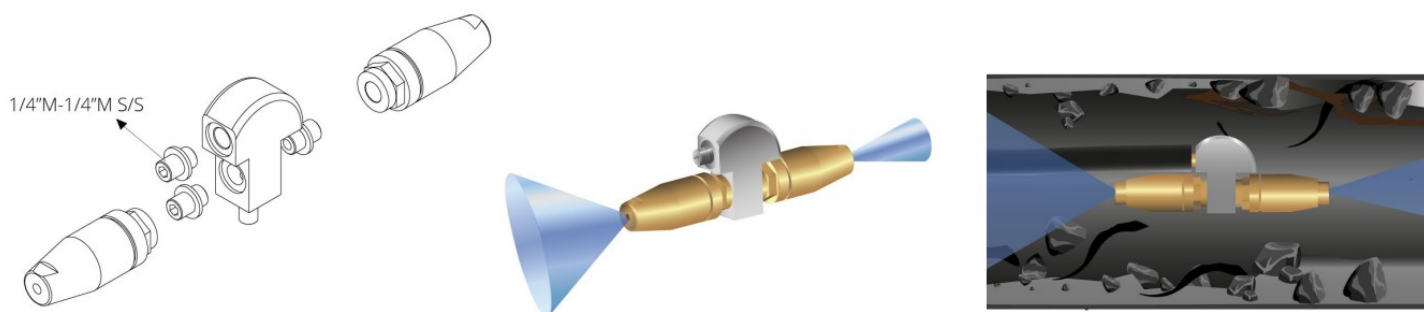


## Arrow 2



Cod.	Description	Connection	Rotating Nozzle	Front jet (Insert)	Lateral jet (Insert)	Arrow Ø x L x H (mm)	Weight (Kg)	Tube size (mm)
30100.02	Freccia 2	1/4" F	2 x 1/4"	-	-	67x52x25	0,40	80 x 200

Arrow supplied with 3 reduced stainless steel nipples and 2 rotating nozzles

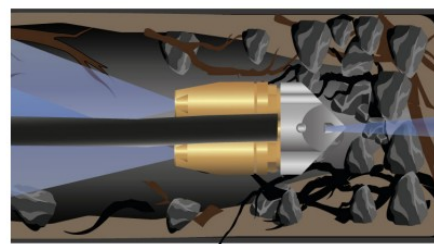
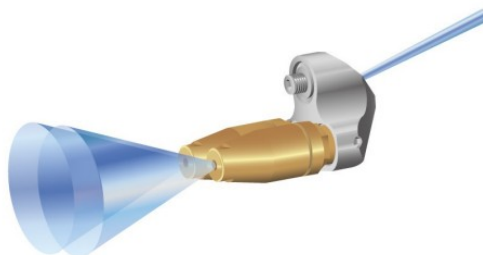
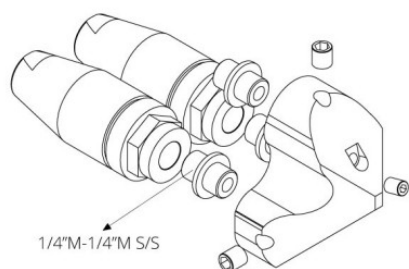


## Arrow 3



Cod.	Description	Connection	Rotating Nozzle	Front jet (Insert)	Lateral jet (Insert)	Arrow Ø x L x H (mm)	Weight (Kg)	Tube size (mm)
30100.03	Freccia 3	1/4" F	2 x 1/4"	1 x M6x8	-	70x67x46,5	0,60	80 - 250

Arrow supplied with 3 reduced stainless steel nipples and 2 rotating nozzles.  
Available with perforated or blind front jet.

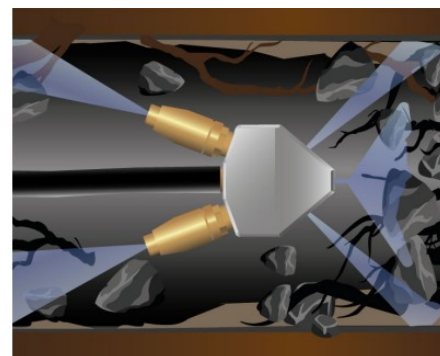
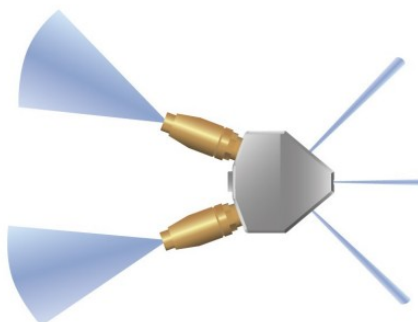
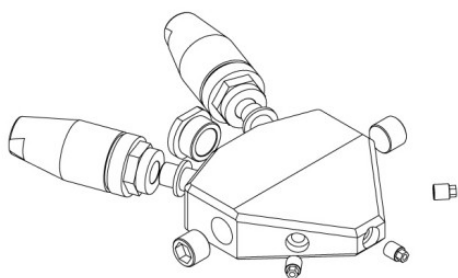


## Arrow 4 & 5



Cod.	Description	Connection	Rotating Nozzle	Front jet (Insert)	Lateral jet (Insert)	Freccia Ø x L x H (mm)	Weight (Kg)	Tube size (mm)
30100.04	Freccia 4	3/8" F	2 x 1/4"	1 x M8x10	2 x M8x10	100x100x30	1,30	120 x 350
30100.05	Freccia 5	1/2" F	2 x 1/4"	1 x M8x10	2 x M8x10	100x100x30	1,30	120 x 350

Arrow supplied with 2 reduced stainless steel nipples and 2 rotating nozzles.  
Available with perforated or blind front jet.



## Accessories



### Reduced nipple in stainless steel

Cod.	Description	Connection	Dimensions ØxL (mm)
17100.03	Nipplo in acciaio inox	1/4"M - 1/4"M	19 x 20



### Rotating nozzles

Cod.	Description	Connection	Ø Front	Dimensions ØxL (mm)	Weight (Kg)	Ø Pipe (mm)
30200.01	Ugello rotante	1/4" F	1,0	32x78	0,27	50 - 150
30200.05	Ugello rotante	1/4" F	1,30	32x78	0,27	50 - 150
30200.12	Ugello rotante	1/4" F	1,70	32x78	0,27	50 - 150